



# MONTHLY MEMBERSHIP PROGRESS REPORT

District 318 D

Results as of: 06/30/2019

GMT: N S SANKAR

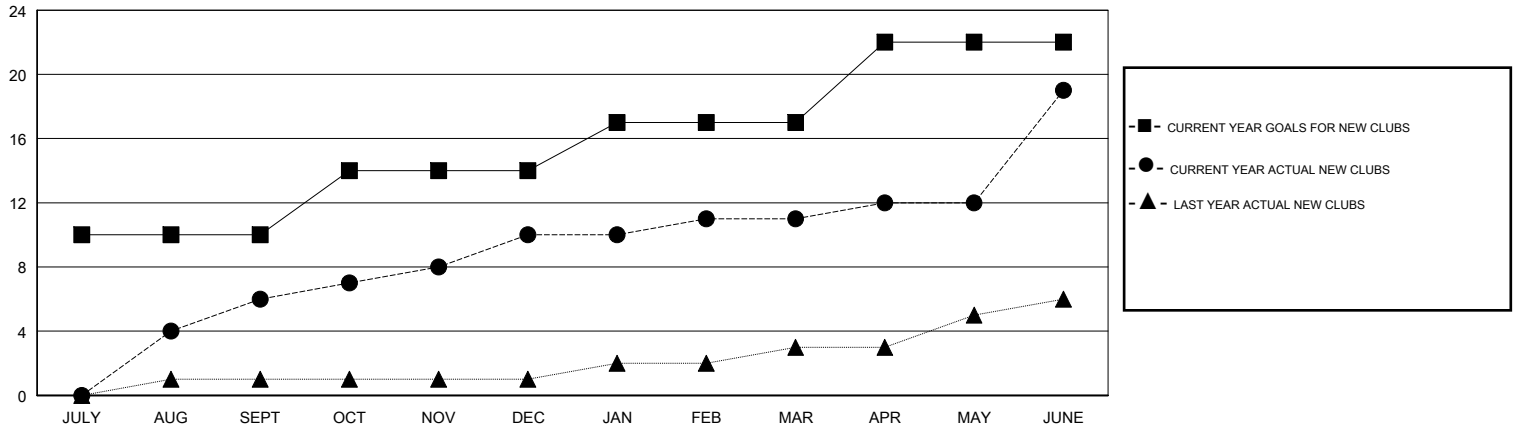
LOCATION INDIA

GMT CA

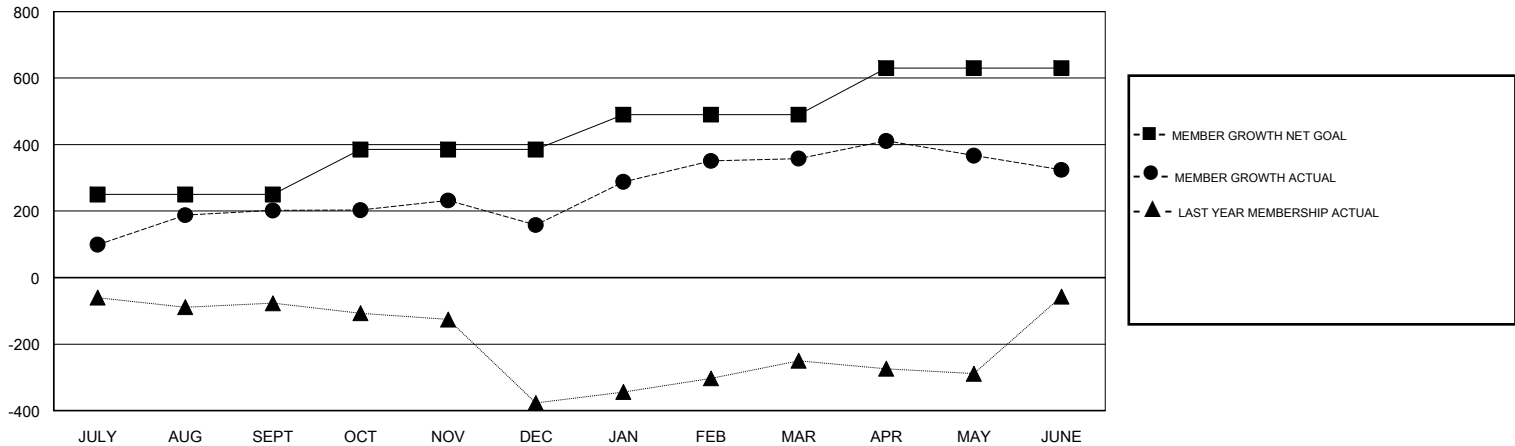
Clubs			
RESULTS FOR 2018-2019			
QUARTER	NEW CLUB GOAL	NEW CLUBS	DROPPED CLUBS
JULY/AUG/SEPT	10	6	0
OCT/NOV/DEC	4	4	4
JAN/FEB/MAR	3	1	0
APR/MAY/JUNE	5	8	3

Members			
RESULTS FOR 2018-2019			
QUARTER	MEMBER GROWTH NET GOAL	MEMBER GROWTH ACTUAL	DROPPED MEMBERS ACTUAL (including transfers)
JULY/AUG/SEPT	250	335	130
OCT/NOV/DEC	135	283	315
JAN/FEB/MAR	105	248	33
APR/MAY/JUNE	140	449	424

GOALS AND ACTUAL NEW CLUBS CUMULATIVE



GOALS AND ACTUAL MEMBERS CUMULATIVE



DROPPED CLUBS: 7	130 CLUBS OF 164 ADDED 1 OR MORE NEW MEMBERS	<u>GENDER DISTRIBUTION</u>	
DROPPED MEMBERS		MALE	4,891 (81.90%)
DECEASED	20	FEMALE	1,081 (18.10%)
CLUB CANCELLED	127	Women Percentage Fiscal Year Goal: 12%	
OTHER	755	TOTAL FAMILY UNIT MEMBERS	1,625
TOTAL	902	FAMILY MEMBERS PAYING HALF DUES	860

[CLICK HERE FOR CUMULATIVE MEMBERSHIP DATA](#)